

Owners & Safety Manual

MSP-1 SQUEEZE-EZE® POWER PACK



Shown with optional jaw.

LENGTH	127 mm (5")
WEIGHT	311.8 gram (11 oz.)
DIAMETER	31.75 mm (1.25")
CLOSING FORCE @5.516 BAR (80 PSI)	Finish—45.36 kilogram (100 lb.)
CAM	PISTON STYLE
MATERIAL	ALUMINUM

Simonds
Manufacturer of Pneumatic and Hydraulic Tools

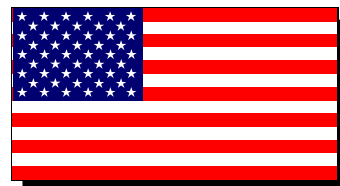


Wear Eye Protection



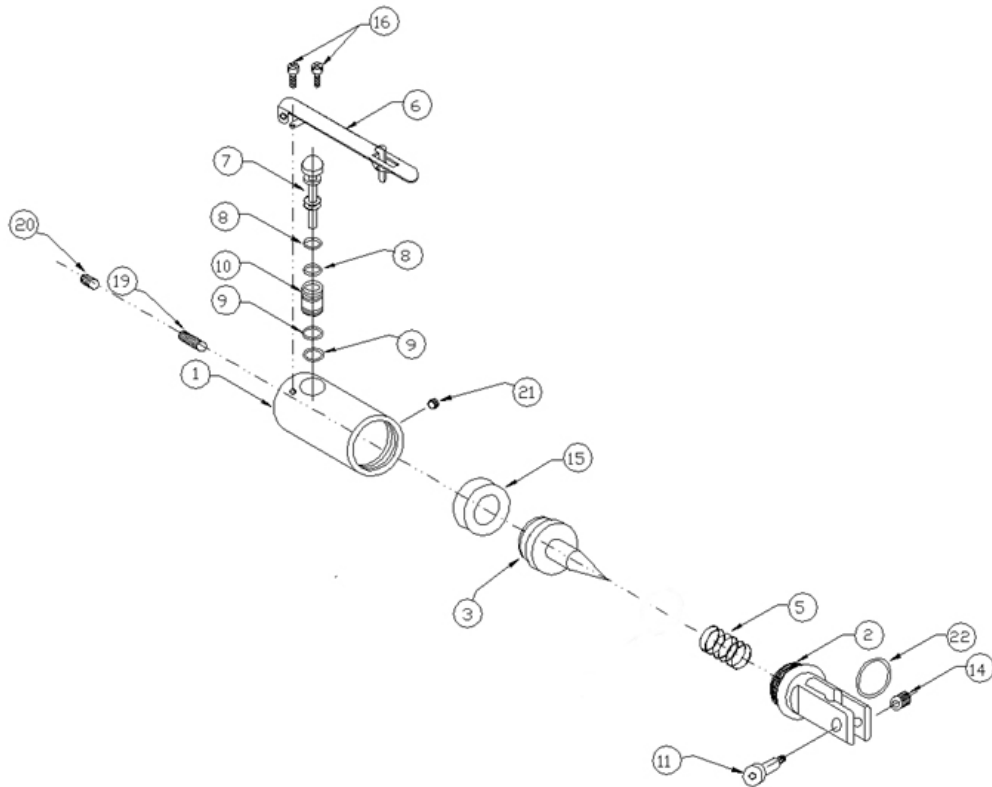
Read manual carefully.

248 ELM ST.
SOUTHBRIDGE, MASSACHUSETTS 01550
USA
PHONE: 508-764-3235
FAX: 508-765-5125
E-mail: sales@simonds-inc.com



Made in the U.S.A.

PARTS BREAKDOWN



DRWG. NO.	DESCRIPTION	PART NO.
1	PISTON HOUSING ASSEMBLY	1PP-MSP**
2	JAW HOUSING	2HA-MSP
3	PISTON SHAFT	3-MSP
5	RETURN SPRING	5-MSP
6	LEVER ASSEMBLY	6TL-MSP
7	SPOOL	7A-MSP
8	SPOOL O’RING (2 required)	16-01-K10
9	SPOOL O’RING (2 required)	16-003-K10
10	VALVE BODY	10A-BP
11	PIVOT SCREW	11-MSP
14	INSERT NUT	14-MSP
15	PISTON CUP	15-MSP***
16	LEVER SCREW (2 required)	28-01-K10
19	ADJUSTMENT SCREW	19-MSP
20	LOCK SCREW	20-MSP
21	BOG SCREW	20-MSP
22	O’RING JAW SPRING	22-MSP-K10

**1PP-MSP includes trigger assembly, valve assembly, adj. screw and bog screw.

***Sold as part of O’ring repair kit—BP-MSP-KIT (22-MSP jaw spring NOT included).

Included with MSP-1 but not shown is the 102-5—5’ Air Hose

****Sold as part of air valve repair kit—SA-4-MSP\BP. Includes parts #7, #8, #9 and #10

OPERATING INSTRUCTIONS:

- Maximum inlet pressure is 5.516 BAR (80 PSI). The power pack needs to have an inline locking regulator to assure that maximum inlet pressure is not exceeded. Minimum air pressure is 2.758 BAR (40 psi). O-rings may not seat properly and unit can leak air if lower than then 2.758 BAR (40 psi).
- For longer tool life it is recommend to use only enough air to complete the job, never exceeding the recommended pressure.
- Tools should have an in line air filter to remove debris, water and particulates. Inline air filter and regulator should be not more than 1.829 meters (6 feet) from the tool.
- An inline lubricator will help to extend the life of the tool. Only use pneumatic oil in the lubricator. If no lubricator is available place a few drops of pneumatic oil in to the air inlet of tool each week. Only lubricants recommended by Simonds are to be used.
- Only tools or jaws recommended and manufactured by Simonds are to be used on this power pack. Use of other tools may constitute a hazard or void warranty.
- To activate unit squeeze lever. Be sure to release start and stop device in case of a failure of energy supply. Keep fingers, hair and clothing away from head when activating tool.
- Air hose must be securely fastened to the air inlet prior to using. Be sure hose is tightened using the proper tool. The air hose should have a .25 mm (1/8") NPT thread attached that will screw in to the tool end.
- Air hose should be attached to air supply (air filtration system) securely. It is recommended that a quick disconnect devise be used to attach air hose to air supply.

SAFETY INSTRUCTIONS

- Inspect tools and hoses each day prior to operation. Air hose that is frayed, cut or abraded should be replaced. Be sure that threads are clean and not worn.
- If the tool is not in use and not positively disconnected from the energy supply, the energy supply system must facilitate isolation and dissipation of pressure by a suitable and lockable shutoff device in order to prevent unexpected start-up.
- Beware of hair, fingers, ties, loose clothing etc. when operating the tool. Keep away from moving parts.
- Always wear eye protection when operating the tool. Beware of ejection of cuttings or chips. Turn head to avoid being exposed to this operation.
- Beware that working on brittle material may cause harmful splinters.
- Always disconnect from air supply when changing tool, during repair, adjusting and inserting tools, maintenance and cleaning operations.
- Simonds tools are not designed for use in explosive atmospheres.
- Simonds tools are not insulated for coming in to contact with electric power sources.
- Do not use tools near personnel where risk of flying debris may hit them.
- Do not point or aim tool at another person.
- Unsecured or cut air hose may cause a whipping action which may result in injury.
- Do not use any attachments not manufactured by Simonds for this tool. Injury may result.
- If the tool is used on a bench stand or a work station be sure that the tool is fastened properly.
- Dispose of tool and material as recommended by local disposal regulations.
- Simonds tools are not for use other than on production line. Tool should not be used as a hammer or pry bar. A "two hand control" may be required depending on the attached tool..
- **DO NOT EXCEED RECOMMENDED WIRE SIZE OR AIR PRESSURE.** Exceeding the recommended wire size for the jaws may cause damage to tool or injury to user.

ASSEMBLY

- Upon receipt inspect box for all parts.
- Remove screw from jaw housing and insert optional jaw. Be sure jaw screw is tight. Jaws should be cleaned and foreign material removed weekly, more often if necessary.
- MSP-1 tool has a “jaw opening adjustment” for limited jaw opening. To use, remove lock screw and turn adjustment screw clockwise. Replace lock screw and tighten against adjusting screw.
- Prior to use attach air hose to air inlet of power pack using proper wrench size. Check that all threads are free of debris.
- Attach air hose to Air filter/Regulator using a quick disconnect device. Be sure that air hose is secure. There should be no air leaks. If there is, remove hose and check threads for damage. Reattach air hose, tighten.

Simonds MSP-1 power pack is a pneumatic tool intended to cut or crimp wires. Simonds power packs are designed to use specific heads or jaws (attachments) for this purpose. These heads are sold separate and rated by the work to be performed.

Pushing down on lever of hand models will activate the tool. When the tool is activated a piston will push forward causing movement at the head. Without the optional attachment a piston with a cam will operate forward. An attached head will open or close when attached to the power pack.

- **ISOLATE AIR WHILE ATTACHING HOSE AND JAW HEAD!**

- Test unit to assure free movement of jaws. Be sure to follow all safety instructions when testing.
- Once unit has been tested and safety issues addressed the unit is ready for production line use.

Simonds
World Leader in Pneumatic Hand Tools

WARRANTY

Simonds Inc. power packs and jaws are warranted to be free from defects in materials and workmanship for a period of one year, barring alterations, abuse or misuse. All products returned for warranty repair must be sent to Simonds Inc., Southbridge, MA at end users expense. Simonds will either repair or replace the tool if it is found defective due to material defect or workmanship at Simonds discretion.

Warranty repairs accepted only through distributors with proper RMA's.